

1A Shirley Road Roseville NSW

5 🚗 5 🚚 2 🚘

*** OPEN SATURDAY 13TH AUGUST, 11.00AM - 11.30AM ***

Commanding a majestic presence, this outstanding brand new residence greets with a soaring void entrance, unveiling luxurious contemporary interiors extending to an equally impressive undercover entertainers' terrace. Masterfully crafted with superior finishes, the home boasts a quality double brick and concrete construction over both grand levels, a wide 26 metre frontage (approx.) and a sizeable sunny backyard. Its central location is just 500 metres from Roseville Station and in the Lindfield Learning Village school catchment, while offering a rapid commute to Chatswood CDB and shops.

* Stunning entrance and foyer adjoin an elegant formal living room

Land Size : 916.9 sqm
View : <https://www.shead.com.au/sale/nsw/north-s-hore-upper/roseville/residential/house/7131115>



Isabella (Ni Yang Fang) Yan (02) 8448 1206



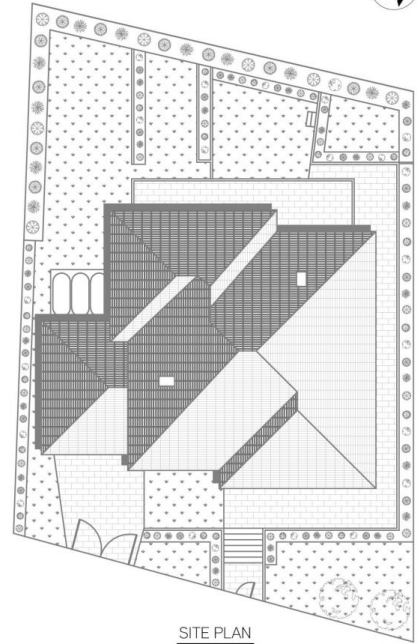
Tony (Anthony) Walker (02) 8448 1215



GROUND FLOOR



UPPER FLOOR



SITE PLAN

All information presented is gathered from third parties and therefore we cannot guarantee it's accuracy. The plans shown here are for presentation purposes & are not part of any legal document or title and are subject to errors, omissions & inaccuracies and should not be used as sole reference. All measurements & figures are approximate. Interested parties should make & rely on their own enquiries.

1A Shirley Road, Roseville