



**1/31 Shirley Road Wollstonecraft NSW**

1 1 1

\*\*\* OPEN SATURDAY 13TH AUGUST, 10.00AM - 10.30AM \*\*\*

**Price** : \$660,000 - \$690,000

**View** : <https://www.shead.com.au/sale/nsw/north-shore-lower/wollstonecraft/residential/apartment/7109456>

A truly outstanding entry point into one of the North Shore's most exclusive harbourside locales, this superbly situated apartment is set in a boutique block of only eight other residences, literally a few steps away from Wollstonecraft station. Immersed in a lush, leafy outlook, it is within walking distance of the harbour foreshore and the spectacular scenery of Berry Island Reserve. Presenting exceptionally well as-is, it offers the option to move in or rent now, or redesign and capitalise on its premium location.

\* Private setting within a security block with only one common wall

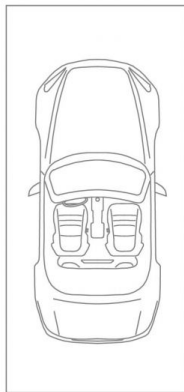


**Daryl Katz**  
(02) 8448 1208

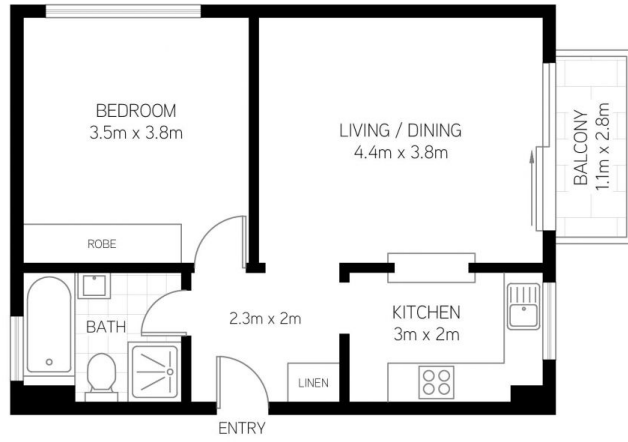


**Jack Baker**  
(02) 8448 1218

<https://www.shead.com.au>



EXCLUSIVE USE RIGHTS  
TO OPEN CAR SPACE  
(NOT ACTUAL LOCATION)



All information presented is gathered from third parties and therefore we cannot guarantee it's accuracy. The plans shown here are for presentation purposes & are not part of any legal document or title and are subject to errors, omissions & inaccuracies and should not be used as sole reference. All measurements & figures are approximate. Interested parties should make & rely on their own enquiries.

1/31 Shirley Road, Wollstonecraft