



## 6/2 Parkes Road Artarmon NSW

2 1 1

\*\*\* OPEN SATURDAY 9TH JULY, 1.30PM - 2.00PM \*\*\*

Poised on the top floor of a popular low-rise block, this oversized apartment is sure to impress with its generous dimensions and private treescape views from most rooms. Capturing an optimum north facing aspect, interiors are illuminated with natural light, while the sun-bathed balcony is ideal for relaxation or entertaining. Ready for instant enjoyment, the home offers scope to further personalise and add value within a premier location. Ideally placed for envied convenience, walking distance to Artarmon station, shops and eateries, as well as sought-after Artarmon Public School, plus footsteps to Cleland Park.

\* Ultra-spacious living areas - separate lounge and dining with space for study

**Price** : For Sale - Contact Agent

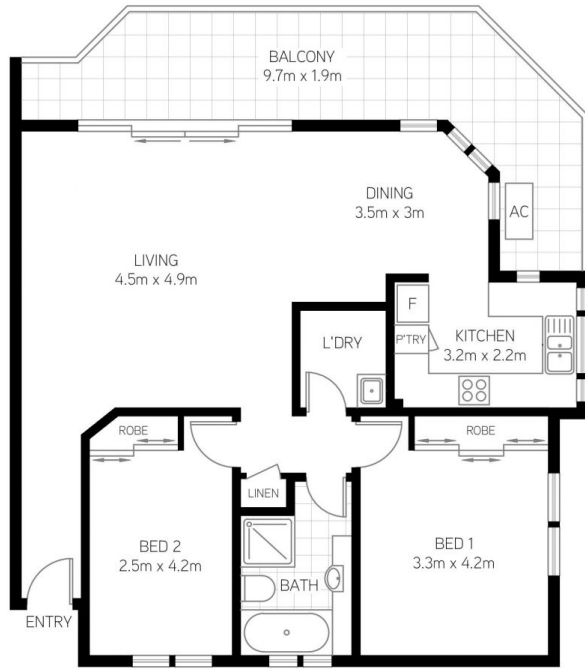
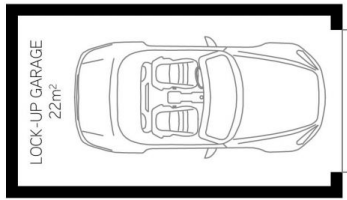
**View** : <https://www.shead.com.au/sale/nsw/north-shore-lower/artarmon/residential/apartment/7008520>



**Daryl Katz**  
(02) 8448 1208



**Isabella (Ni Yang Fang) Yan**  
(02) 8448 1206



All information presented is gathered from third parties and therefore we cannot guarantee it's accuracy. The plans shown here are for presentation purposes & are not part of any legal document or title and are subject to errors, omissions & inaccuracies and should not be used as sole reference. All measurements & figures are approximate. Interested parties should make & rely on their own enquiries.

6/2 Parkes Road, Artarmon