



3/67 Pacific Highway Roseville NSW

2 2 1

*** INSPECTION BY APPOINTMENT ***

This is a rare opportunity to acquire a boutique Art Deco apartment in a building that's superbly located within an R4 zone in the heart of Roseville. Ideal for investors, large or multi-generational families keen to live close, or first homebuyers seeking an additional income, this sort of offering doesn't come along often. Immaculate and full of alluring character features, each home offers two bedrooms, two bathrooms and spacious living areas. Both apartments enjoy a north east aspect at the rear of the block and share no common wall except with each other. They also feel remarkably tranquil given they're only steps from Roseville Station, express city buses and a fabulous choice of shops, caf?s and restaurants.

View : <https://www.shead.com.au/sale/nsw/north-shore-upper/roseville/residential/apartment/6941060>



Tony (Anthony) Walker
(02) 8448 1215



Kurt Lawther
(02) 8448 1200

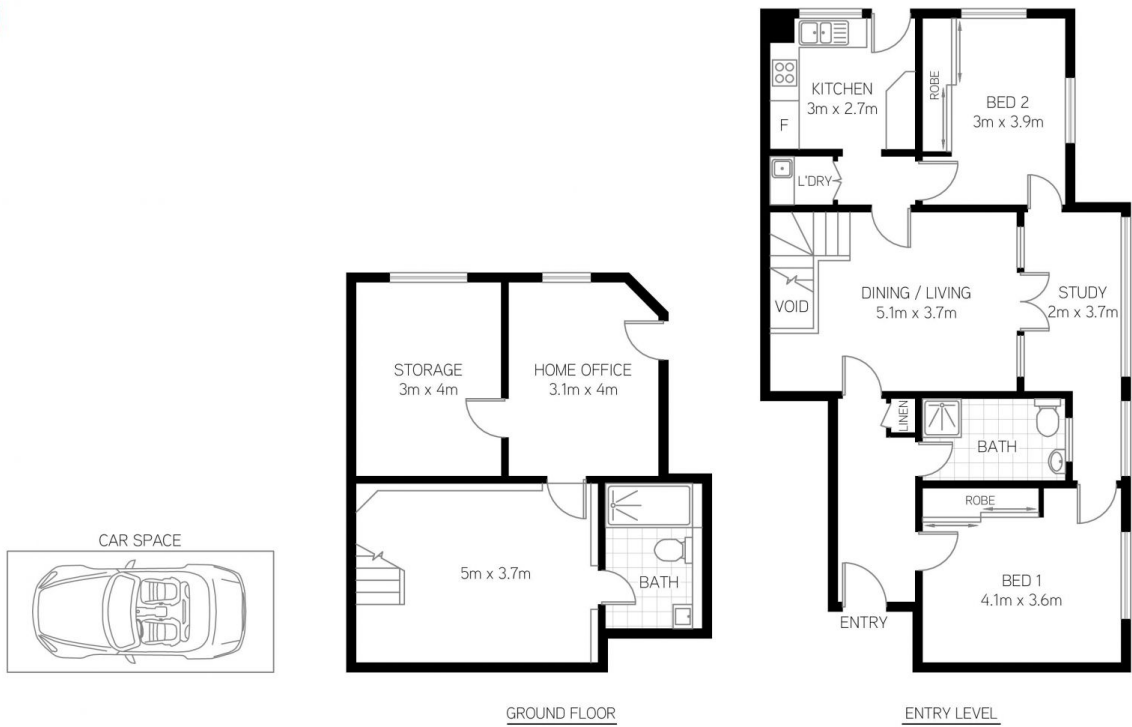
* Double brick residence set in a well maintained building

<https://www.shead.com.au>



All information presented is gathered from third parties and therefore we cannot guarantee it's accuracy. The plans shown here are for presentation purposes & are not part of any legal document or title and are subject to errors, omissions & inaccuracies and should not be used as sole reference. All measurements & figures are approximate. Interested parties should make & rely on their own enquiries.

2/67 Pacific Highway, Roseville



All information presented is gathered from third parties and therefore we cannot guarantee it's accuracy. The plans shown here are for presentation purposes & are not part of any legal document or title and are subject to errors, omissions & inaccuracies and should not be used as sole reference. All measurements & figures are approximate. Interested parties should make & rely on their own enquiries.

3/67 Pacific Highway, Roseville