



10 Kenilworth Road Lindfield NSW

4 2 2

*** OPEN SATURDAY 22ND JANUARY, 10.00AM - 10.30AM ***

Set beyond a lovely garden frontage, this beautifully presented double brick residence promises to captivate a growing family seeking to establish themselves in a premier lifestyle location. Recently updated interiors exude charm, with superb flow throughout the home bringing together a choice of living zones that culminate in a gorgeous backyard oasis. The property resides on a generous 690sqm block and is positioned within walking distance of Lindfield Station, local caf?s and dining options, while sought-after schools and vibrant Chatswood CBD are only moments away.

* Welcoming front porch enjoys elevated position overlooking garden

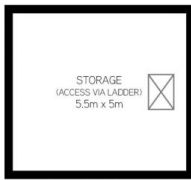
Price : Auction
View : <https://www.shead.com.au/sale/nsw/north-shore-upper/lindfield/residential/house/6788542>



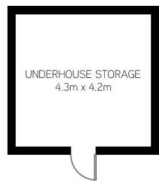
Tony (Anthony) Walker
(02) 8448 1215



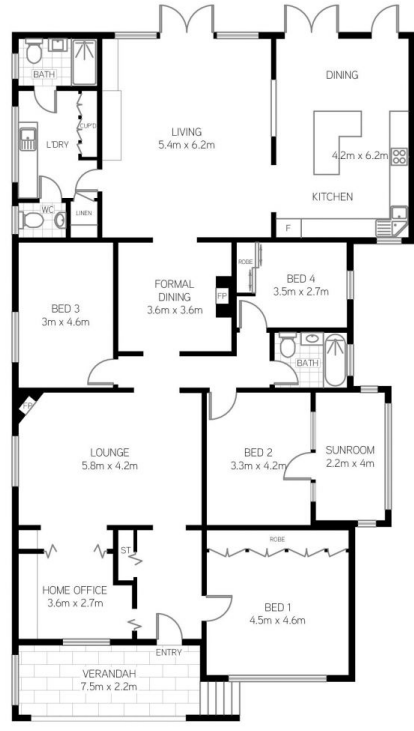
Isabella (Ni Yang Fang) Yan
(02) 8448 1206



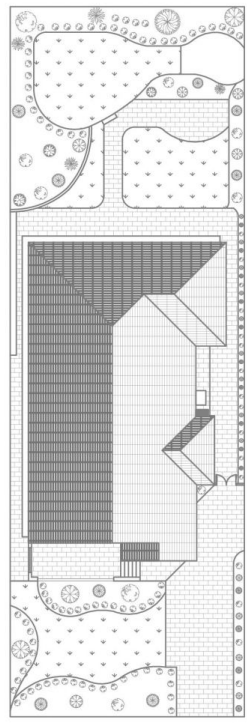
ATTIC



UNDERHOUSE STORAGE
4.3m x 4.2m



GROUND LEVEL



SITE PLAN

All information presented is gathered from third parties and therefore we cannot guarantee it's accuracy. The plans shown here are for presentation purposes & are not part of any legal document or title and are subject to errors, omissions & inaccuracies and should not be used as sole reference. All measurements & figures are approximate. Interested parties should make & rely on their own enquiries.

10 Kenilworth Road, Lindfield