

**25/506 Pacific Highway Lane Cove NSW**

2 2 2

\*\*\* OPEN SATURDAY 22ND JANUARY, 12.30PM - 1.00PM \*\*\*

**View :** <https://www.shead.com.au/sale/nsw/north-shore-lower/lane-cove/residential/unit/6777030>

Peacefully set in a relaxed urban retreat, within leafy, landscaped ground of the architect designed 'Ridgewood' security garden complex. This generous two bedroom apartment provides a combination of space, comfort and convenience that will appeal to a broad range of savvy buyers. The property is centrally located with easy access to a host of major hubs including Lane Cove village, Chatswood Westfield and North Sydney CBD. It's walking distance to Artarmon Station, the bus stop at the door step moments to Chatswood and Sydney CBD.

\* Positioned at the back of building overlooking the beautiful & tranquil gardens

\* The apartment stands alone - No common wall

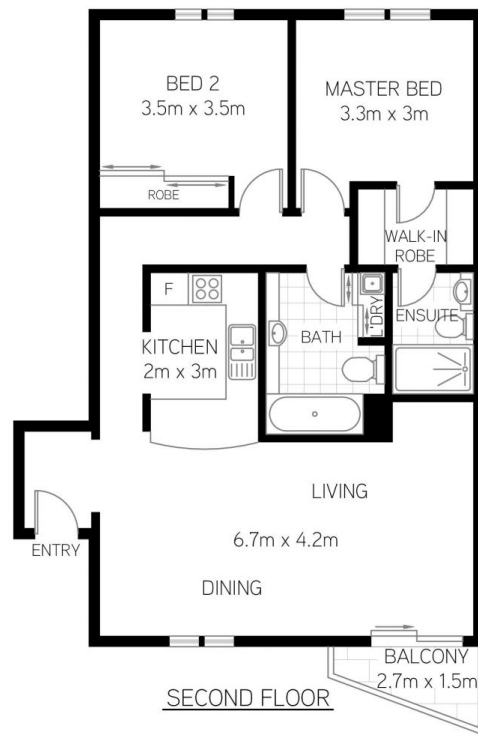
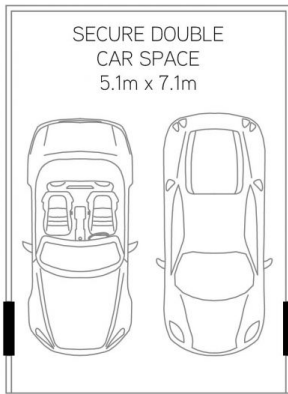
\* Light filled north-facing easy care layout that doesn't



**Cindy (Yan) Fu**  
**(02) 8448 1217**



**Hugh O'Neill**  
**(02) 8448 1214**



All information presented is gathered from third parties and therefore we cannot guarantee it's accuracy. The plans shown here are for presentation purposes & are not part of any legal document or title and are subject to errors, omissions & inaccuracies and should not be used as sole reference. All measurements & figures are approximate. Interested parties should make & rely on their own enquiries.

25/506-512 Pacific Highway, Lane Cove