



2 Waratah Street Roseville NSW

5 🚗 6 🚗 2 🚗

*** INSPECT BY APPOINTMENT ***

Nestled in the quiet backstreets of Roseville yet within easy reach of vibrant Chatswood CBD, this perfectly placed home is ready for a family to enjoy. Immaculately maintained interiors are teeming with space over two levels, featuring a wonderful choice of flexible living zones and fantastic connection to a delightful low maintenance backyard with two entertaining havens. The fully fenced property is set on a generous 657.6sqm (approx.) level block and is a short stroll to buses and beautiful Beauchamp Park, while near popular schools and all the excitement of Chatswood caf s, dining, Westfield major shops and the more opulent Chatswood Chase.

Land Size : 657.6 sqm

View : <https://www.shead.com.au/sale/nsw/north-sore-upper/roseville/residential/house/6483382>



Isabella (Ni Yang Fang) Yan
(02) 8448 1206

* Large living area steps down to a versatile music or

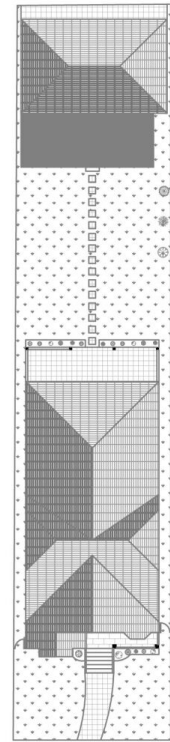
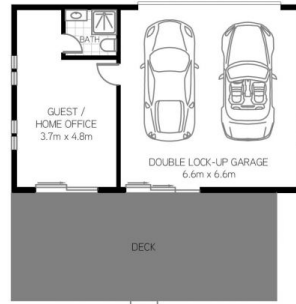
<https://www.shead.com.au>



ENTRY FLOOR



FIRST FLOOR



SITE PLAN

All information presented is gathered from third parties and therefore we cannot guarantee its accuracy. The plans shown here are for presentation purposes & are not part of any legal document or title and are subject to errors, omissions & inaccuracies and should not be used as sole reference. All measurements & figures are approximate. Interested parties should make & rely on their own enquiries.

2 Waratah Street, Roseville