



**5/1 Milner Road Artarmon NSW**

**3** **1** **2**

\*\*\* SOLD! SOLD! SOLD! \*\*\*

Embrace a park-side lifestyle of immense privacy in this wonderful townhouse, set in an elevated position on the corner of Milner and Reserve Roads. The layout invites light to pour in from two ends, in a generously-scaled design that features a large entertainers' courtyard and a handy second courtyard under northerly sunshine. Finished with timber floorboards on both levels, this lovely townhouse has an end of row position with only one common wall and includes secure basement parking and storage. Artarmon Public School is just on the other side of the park, while shops, cafes and city trains are just a few minutes' walk away.

**Price** : SOLD - Contact Agent

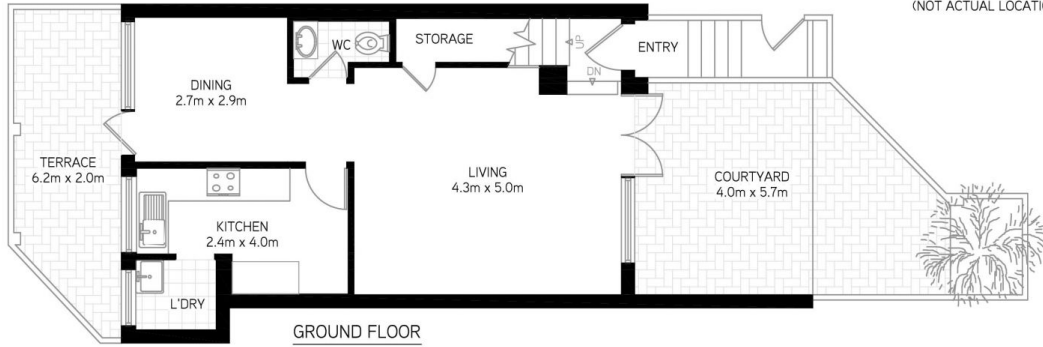
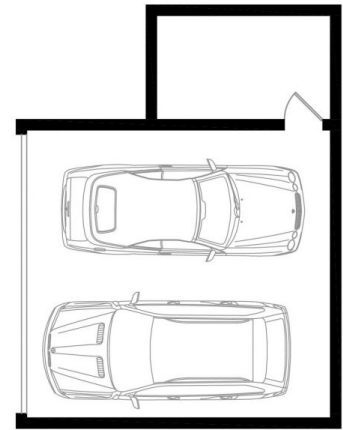
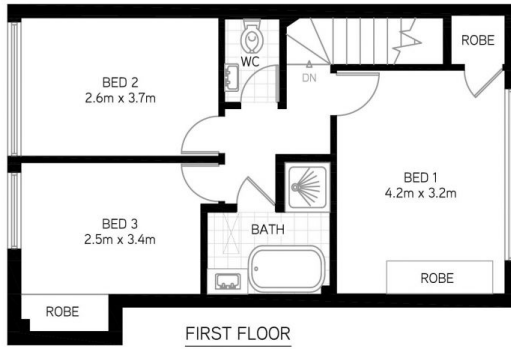
**View** : <https://www.shead.com.au/sale/nsw/north-shore-lower/artarmon/residential/townhouse/6244863>



**Isabella (Ni Yang Fang) Yan**  
**(02) 8448 1206**

\* Naturally bright interiors benefit from light entering from

<https://www.shead.com.au>



All information presented is gathered from third parties and therefore we cannot guarantee its accuracy. The plans shown here are for presentation purposes & are not part of any legal document or title and & are subject to errors, omissions & inaccuracies and should not be used as sole reference. All measurements & figures are approximate. Interested parties should make & rely on their own enquiries.

5/1 Milner Road, Artarmon