



247 Mowbray Road Chatswood NSW

3 3 2

*** SOLD! SOLD! SOLD! ***

Commanding a north-to-rear corner block of 758.8sqm (approx.), this incredible home reflects a commitment to quality in every aspect of its comprehensive upgrade. Every room is generously scaled, exemplified by the spacious dimensions of the formal and casual living areas and the huge master suite. Exhibiting genuine character with well-preserved period details, this home also features a stunning kitchen, stylish bathrooms and a fabulous wraparound garden with a studio. Schools, parks, Chatswood CBD and transport are all easy to reach.

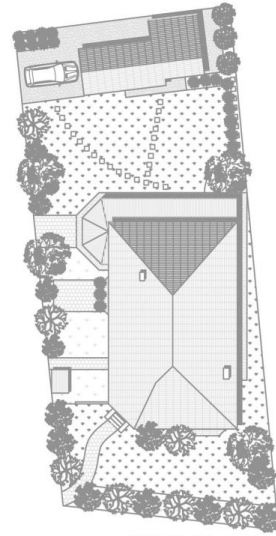
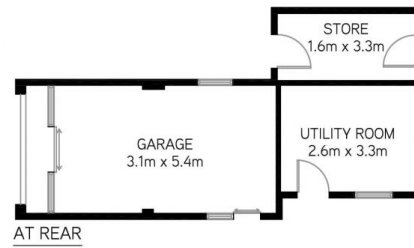
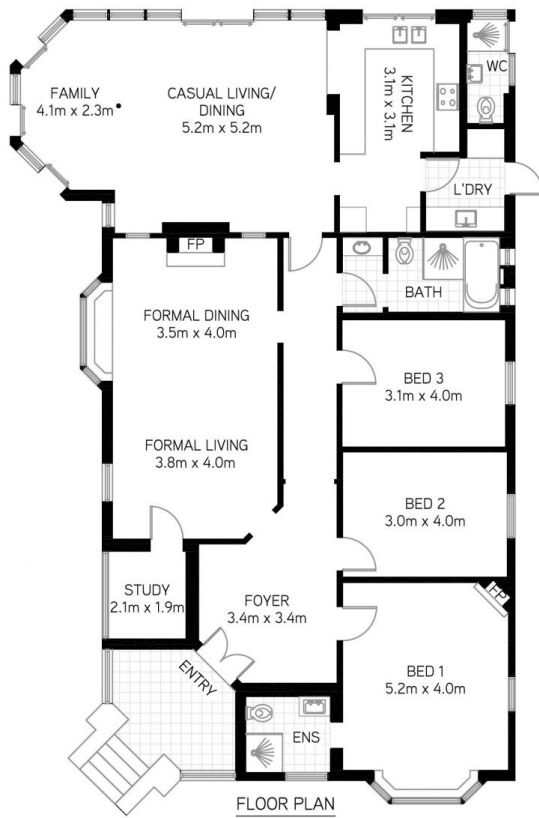
- * Large formal entertaining area is adorned with an original fireplace
- * Light pours into the casual living zone wrapped in picture

Price : SOLD
Land Size : 758.8 sqm
View : <https://www.shead.com.au/sale/nsw/north-s-hore-lower/chatswood/residential/house/624861>



Isabella (Ni Yang Fang) Yan
(02) 8448 1206

<https://www.shead.com.au>



All information presented is gathered from third parties and therefor we cannot guarantee it's accuracy. The plans shown here are for presentation purposes & are not part of any legal document or title and & are subject to errors, omissions & inaccuracies and should not be used as sole reference. All measurements & figures are approximate. Interested parties should make & rely on their own enquiries.

247 Mowbray Road, Chatswood