



38 Hawthorne Avenue Chatswood NSW

3 3 1

*** SOLD! SOLD! SOLD! ***

A statement in contemporary elegance, this immaculately presented home promises high levels of comfort with relaxed leafy surrounds. The floorplan provides generous zones for living and dining complemented by a sheltered outdoor area and an established garden. This is a delightful option for families who prefer tranquility and the close connection to Lane Cove National Park, while residing just minutes away from great schools, transport and retail options. It's just minutes from Chatswood CBD and less than 20mins drive from the city.

* Bright and flowing design with generous settings for living and dining

* Covered outdoor area overlooks the established garden with lawn

Price : SOLD
Land Size : 362 sqm
View : <https://www.shead.com.au/sale/nsw/north-s-hore-lower/chatswood/residential/house/6244860>



Hugh O'Neill
(02) 8448 1214

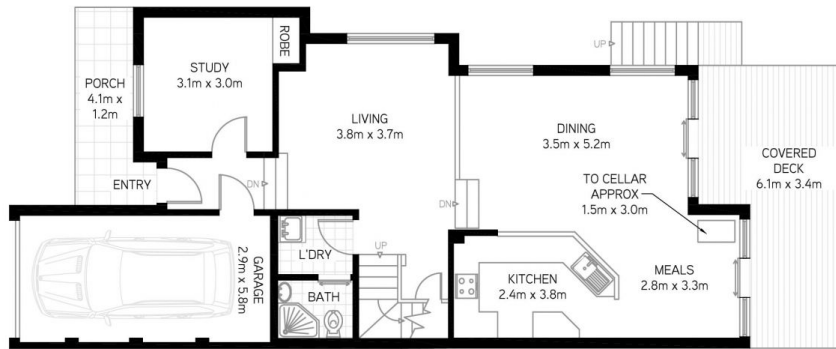


Cindy (Yan) Fu
(02) 8448 1217

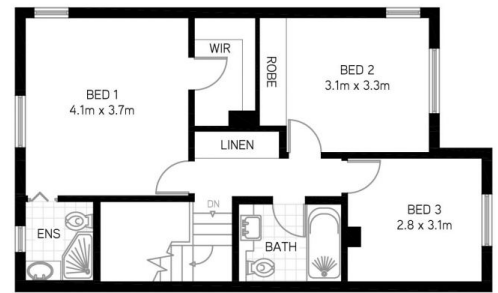
<https://www.shead.com.au>



SITE PLAN



GROUND FLOOR



FIRST FLOOR

All information presented is gathered from third parties and therefore we cannot guarantee it's accuracy. The plans shown here are for presentation purposes & are not part of any legal document or title and & are subject to errors, omissions & inaccuracies and should not be used as sole reference. All measurements & figures are approximate. Interested parties should make & rely on their own enquiries.

38 Hawthorne Avenue, Chatswood