



6 The Grove Roseville NSW

5 3 2

*** SOLD! SOLD! SOLD! ***

Defined by stunning interiors and an abundance of outdoor space, this spectacular home delivers superior family comfort with effortless access to Roseville Village. The classic design bears all of the hallmarks of the area's grand family homes including divine entertaining settings, plus manicured gardens with a gazebo and a large swimming pool. Upgraded to an impressive finish in recent years, this superb home provides a granny flat and multiple bedroom suites, assuring luxurious accommodation for family and guests. It rests on 1,000sqm (approx.) in a prized street, an easy level stroll from great schools, village conveniences and the station.

* Spacious light-filled lounge with green outlooks and a gas fireplace

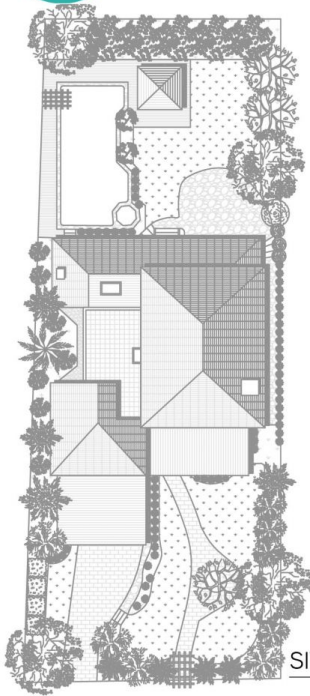
Price : SOLD - Contact Hugh O'Neill
Land Size : 1000 sqm
View : <https://www.shead.com.au/sale/nsw/north-s-hore-upper/roseville/residential/house/6244833>



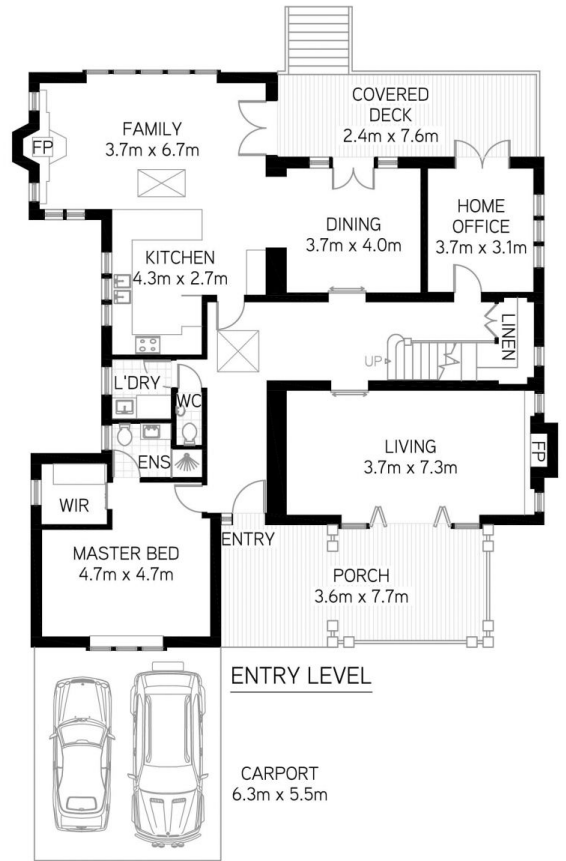
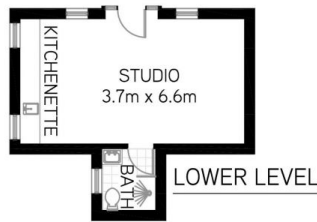
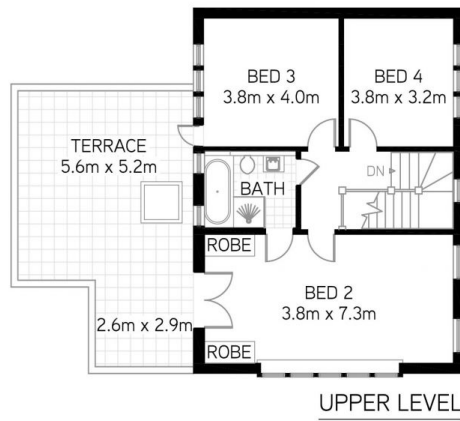
Hugh O'Neill
 (02) 8448 1214



Isabella (Ni Yang Fang) Yan
 (02) 8448 1206



SITE PLAN



All information presented is gathered from third parties and therefore we cannot guarantee its accuracy. The plans shown here are for presentation purposes & are not part of any legal document or title and are subject to errors, omissions & inaccuracies and should not be used as sole reference. All measurements & figures are approximate. Interested parties should make & rely on their own enquiries.

6 The Grove, Roseville