



29 - 37A Gilpin Street Camperdown NSW

16 6 6

*** SOLD SOLD SOLD ***

A rare find in a prized investment hotspot, this complex of six townhouses (4x3 bed & 2x2 bed) commands a prime holding with three street fronts. Each home in this leafy garden complex is splashed with northerly sunshine and ideally designed with generous indoor/outdoor living space. Bedrooms are well-scaled and each home provides an internal laundry and a garage. Reap the reward of multiple rental streams or explore the potential to transition to strata title or redevelop (STCA). It is placed in a peaceful neighbourhood that's a walk from parks, schools, city transport and fantastic foodie destinations.

* Superb opportunity to boost your portfolio in an exciting locale

* 4 x 3 bed, 1.5 bath, 1 car / 2 x 2 bed, 1.5 bath, 1 car

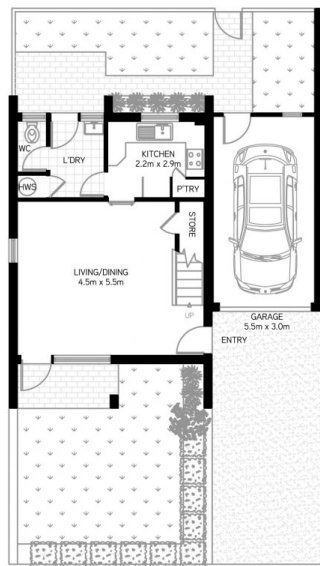
Price : SOLD - Contact Agent
Land Size : 1086 sqm
View : <https://www.shead.com.au/sale/nsw/inner-west/camperdown/residential/house/6244731>



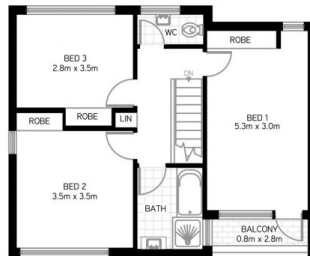
Dick (Richard) Crampton (02) 8448 1216



Hugh O'Neill (02) 8448 1214



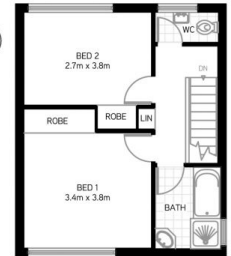
Typical 3 Bedroom



FIRST FLOOR



Typical 2 Bedroom



FIRST FLOOR

All information presented is gathered from third parties and therefore we cannot guarantee its accuracy. The plans shown here are for presentation purposes & are not part of any legal document or title and are subject to errors, omissions & inaccuracies and should not be used as sole reference. All measurements & figures are approximate. Interested parties should make & rely on their own enquiries.

29 - 37a Gilpin Street, Camperdown