



53 Hill Street Roseville NSW

Ground floor shop located within popular Hill Street shopping strip.

Only footsteps from Roseville Station this shop is conveniently located nearby council car parking and popular cafe's, local pharmacy and grocery store.

Enjoy prominent signage and exposure to neighbourhood shopping strip suitable for a variety of retail, commercial, showroom & medical users (STCA).

The property comprises of 79sqm approx.

- â€¢ Rear Lane Access With Yard
- â€¢ Great Natural Light Through Out
- â€¢ Council Car Park At Rear
- â€¢ Attractive Lease Terms

Price : Leased by Rick Sombroek 0412 280 181
Building Size : 79 sqm
View : <https://www.shead.com.au/lease/nsw/north-shore-upper/roseville/commercial/retail/6244698>



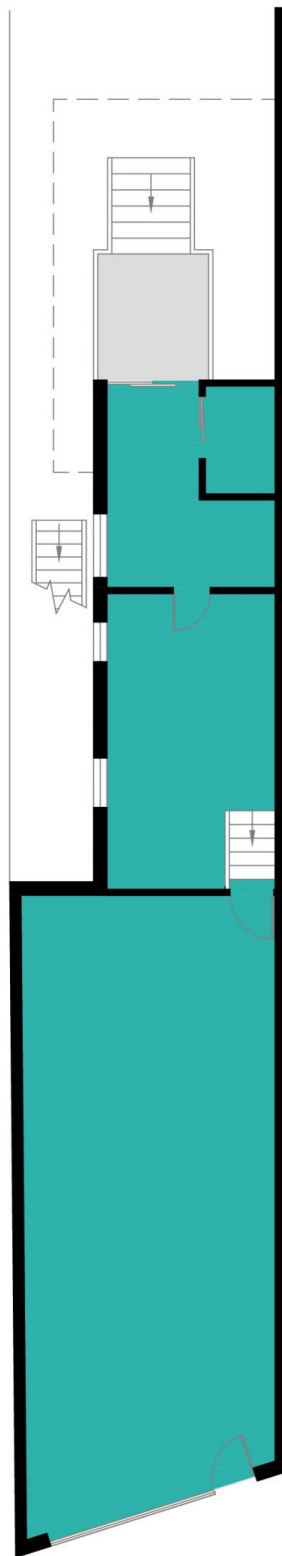
Rick (Richardus) Sombroek
 (02) 8448 1244



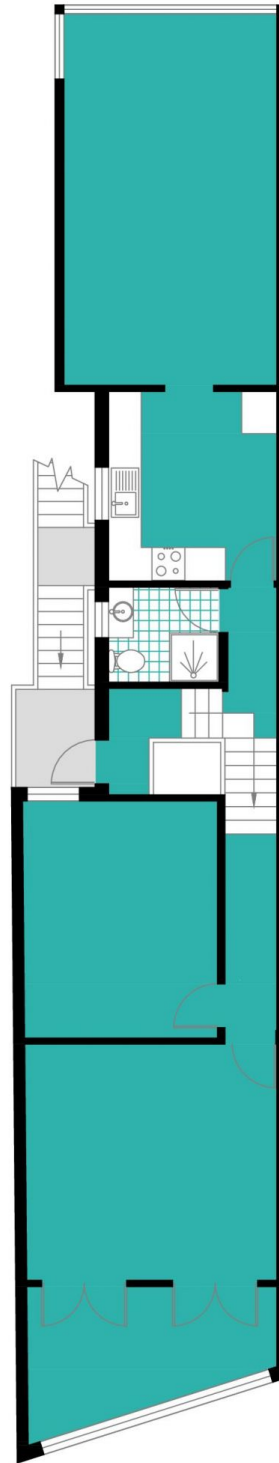
Henry Farrell
 (02) 8448 1207



Roseville 53 Hill Street



GROUND FLOOR



FIRST FLOOR



Disclaimer: Plans shown are for presentation purposes and are not part of any legal document or title and are subject to errors, omissions, and inaccuracies and should not be used as sole reference. All measurements and figures are approximate. Interested parties should make their own enquiries.