

140 Boundary Street Roseville NSW

3 **1** **4**

***** SOLD SOLD SOLD!!*****

Resting on a leafy corner block of 658sqm, this wonderful north-facing home is an astute entry point into the family home market bearing significant potential. Character interiors are well-proportioned across a bright and functional layout that provides three bedrooms plus a sunroom. Perfect for those who value their outdoor space, this delightful home provides wraparound gardens along with plenty of room to extend as the family grows. Roseville Public School is close by, while Roseville Village and Chatswood CBD a just a few minutes' drive away.

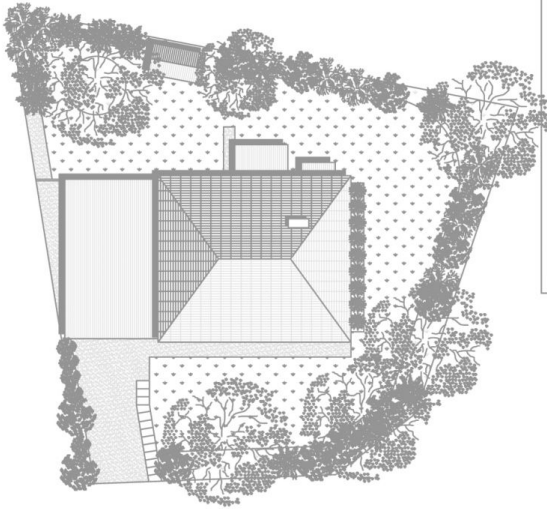
- * Neat interiors with polished timber floors assuring low maintenance living
- * Separate living and dining areas, cosy lounge is appointed with a fireplace

Price : SOLD by Geoff Luby 0418 123 456
Land Size : 658 sqm
View : <https://www.shead.com.au/sale/nsw/north-s-hore-upper/roseville/residential/house/6244690>

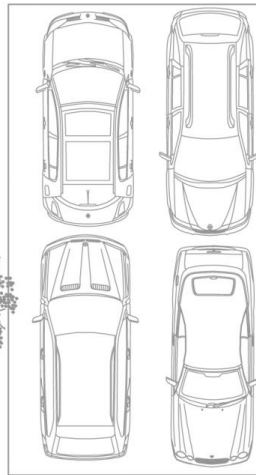


Tommy Liu
(02) 8448 1222

<https://www.shead.com.au>



SITE PLAN

CARPORT
9.7m x 5.8m

FLOOR PLAN

All information presented is gathered from third parties and therefore we cannot guarantee its accuracy. The plans shown here are for presentation purposes & are not part of any legal document or title and are subject to errors, omissions & inaccuracies and should not be used as sole reference. All measurements & figures are approximate. Interested parties should make & rely on their own enquiries.

140 Boundary Street, Roseville