

79 Victoria Avenue Chatswood NSW

Located on the fringe of Chatswood's industrial precinct, on tree lined Victoria Avenue this property offers fantastic value for money to a commercial user requiring large area and generous parking at an unbeatable rate!

Currently two (2) floors available of approximately 720sqm and 810sqm with up to 50 car spaces, a rare opportunity in the current market.

79 Victoria Avenue is situated approximately 1.5km's from Chatswood CBD and 600m from Eastern Valley Way, making it easily accessible from the City, North Shore and Northern Beaches.

Suited to a variety of uses including office, indoor recreation, wholesale and showroom with building signage also available (STCA).

Price : Call Bill Geroulis 0413 100 200
Building Size : 1530 sqm
View : <https://www.shead.com.au/lease/nsw/north-shore-lower/chatswood/commercial/offices/6244685>



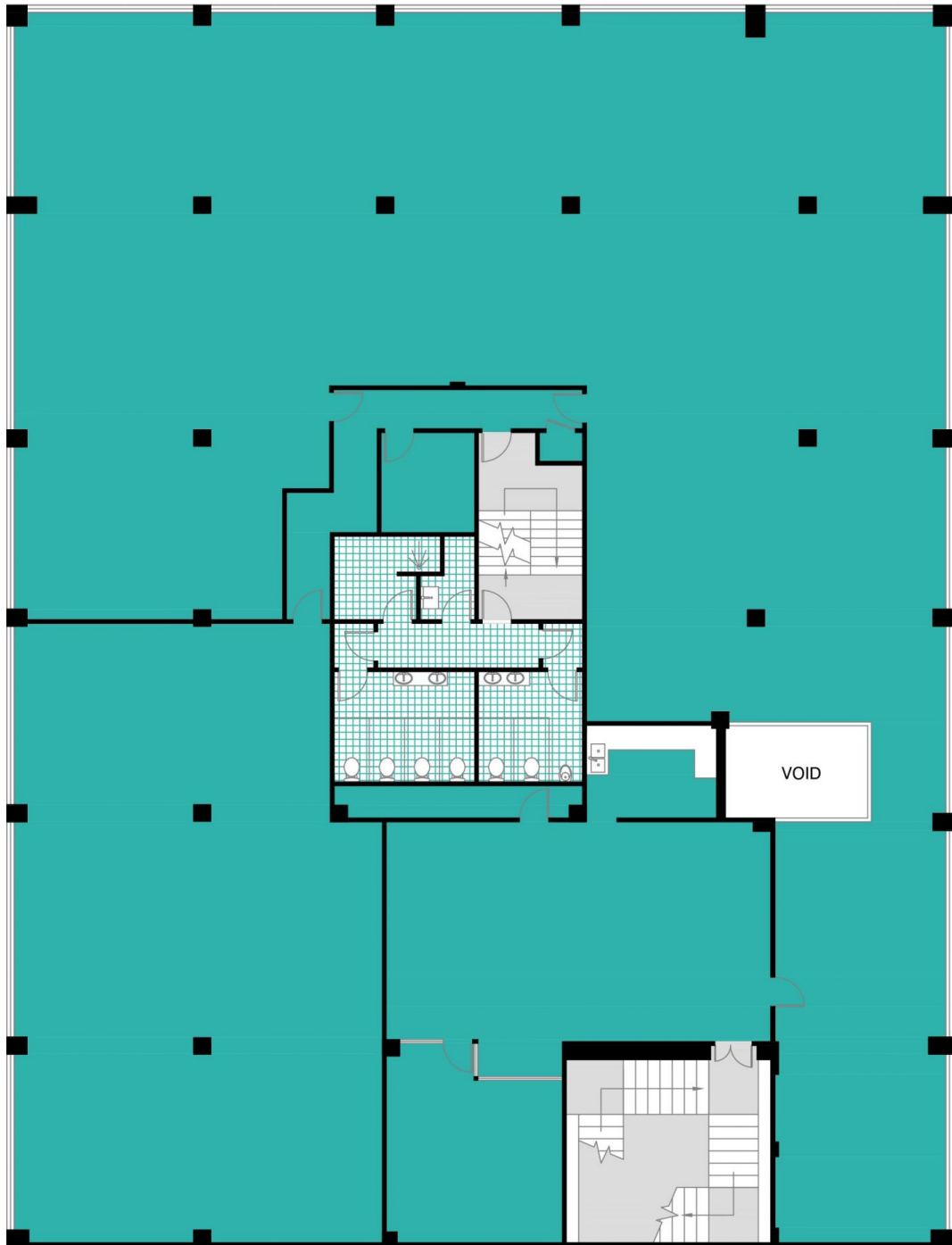
Bill Geroulis
(02) 8448 1243



Rick (Richardus) Sombroek
(02) 8448 1244



Chatswood 79 Victoria Avenue



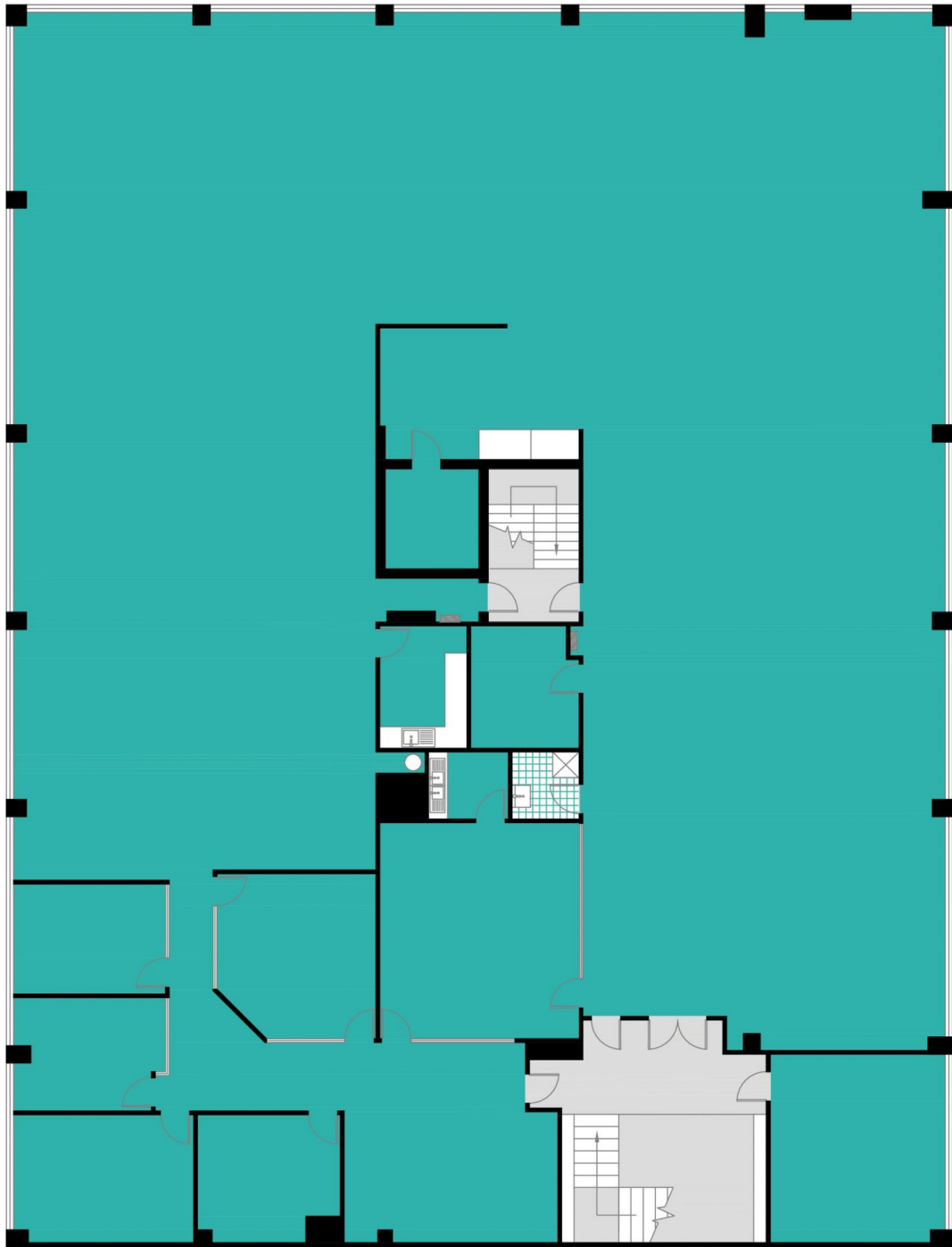
FIRST FLOOR



Disclaimer: Plans shown are for presentation purposes and are not part of any legal document or title and are subject to errors, omissions, and inaccuracies and should not be used as sole reference. All measurements and figures are approximate. Interested parties should make their own enquiries.



Chatswood 79 Victoria Avenue



SECOND FLOOR



Disclaimer: Plans shown are for presentation purposes and are not part of any legal document or title and are subject to errors, omissions, and inaccuracies and should not be used as sole reference. All measurements and figures are approximate. Interested parties should make their own enquiries.