



6/11-19 View Street Chatswood NSW

2 1 1

*** SOLD SOLD SOLD ***

Urban Haven in a Tranquil Garden Setting (Enter via View Lane)

Nestled amid lush, leafy gardens, this ground floor apartment is extraordinarily peaceful and private, despite its proximity to the highway and Chatswood CBD. Offering the rare appeal of two separate outdoor spaces for relaxed alfresco living, its original interiors offer exceptionally comfortable modern living as-is. Located to offer the utmost in convenience, it's just a 500m walk to Chatswood station.

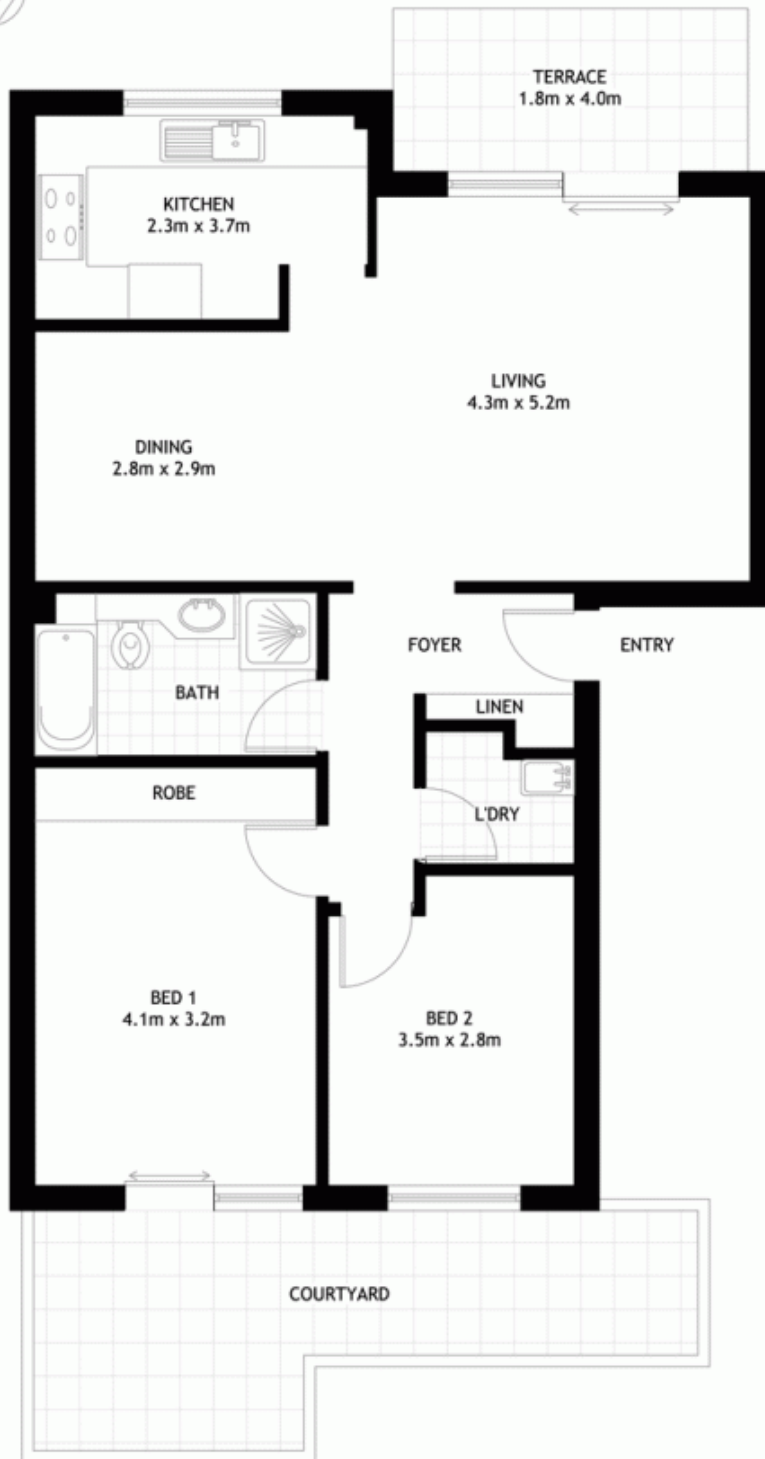
- * Combined lounge and dining room opening out to patio
- * Patio flows out on to discrete common lawns and gardens
- * Master bedroom opens out on to a sunny rear courtyard

Price : \$797,000

View : <https://www.shead.com.au/sale/nsw/north-shore-lower/chatswood/residential/apartment/6244238>



Tommy Liu
(02) 8448 1222



(NOT ACTUAL LOCATION)

Chatswood
6/11-19 View Street



8448 1200
shead.com.au

Plans shown are for presentation purposes and are not part of any legal document or title and are subject to errors omissions and inaccuracies and should not be used as sole reference. All measurements and figures are approximate. Interested parties should make and rely on their own enquiries.