



6a/6-18 Bridge Road Hornsby NSW

Bright First Floor Office. Quality office space with pleasant northerly outlook. The property is conveniently located within close proximity to Westfield Shopping Centre and Hornsby Railway Station.

- * Flexible workspace - 220 sqm approx
- * Fully self-contained
- * 24 hour access
- * Abundant car parking

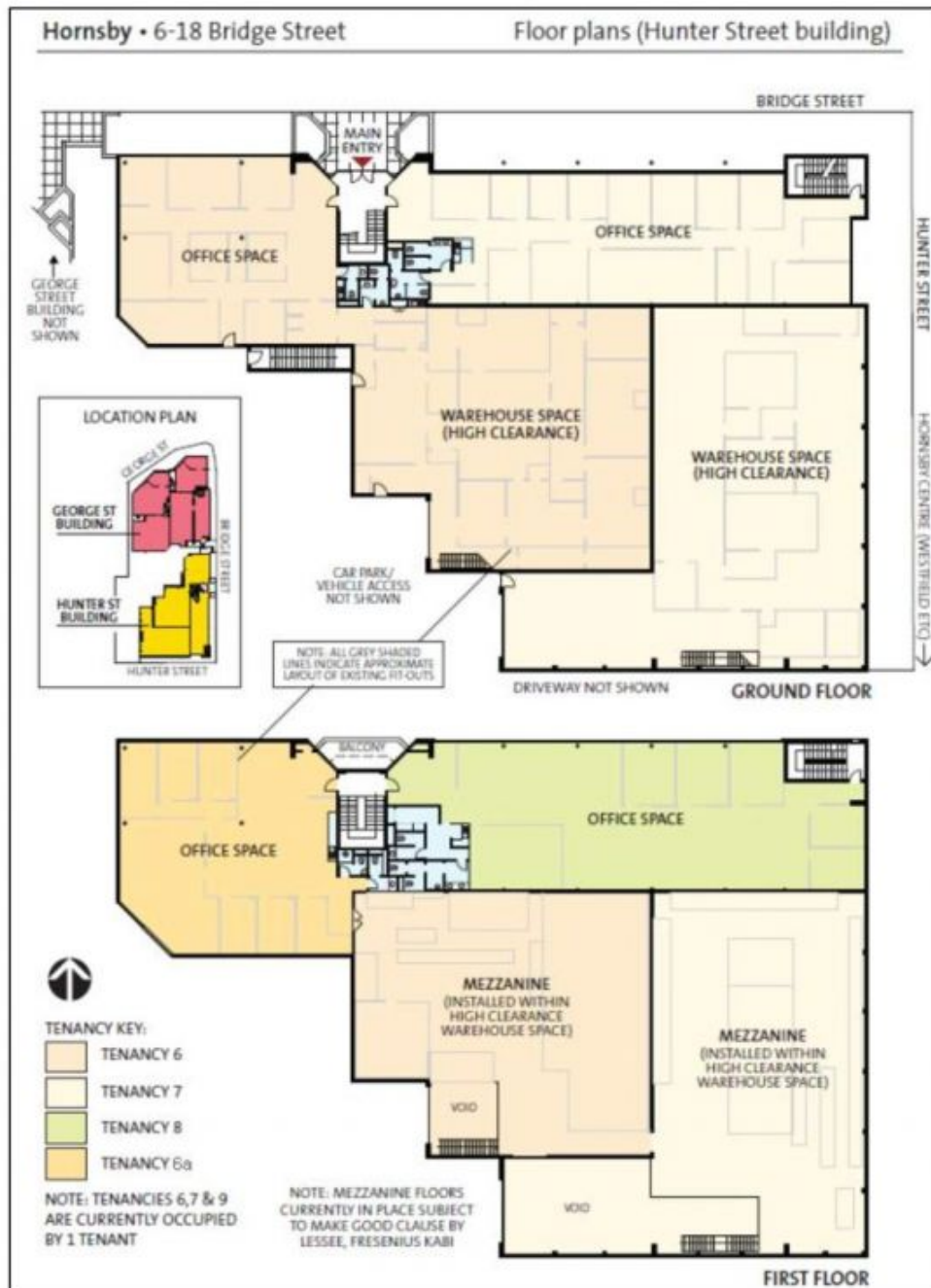
Contact Jacob Broxom 0422 194 532 or Rick Sombroek 0412 280 181

Price : Contact Agent
Building Size : 220 sqm
View : <https://www.shead.com.au/lease/nsw/northern-shore-upper/hornsby/commercial/offices/6239942>



Rick (Richardus) Sombroek
(02) 8448 1244

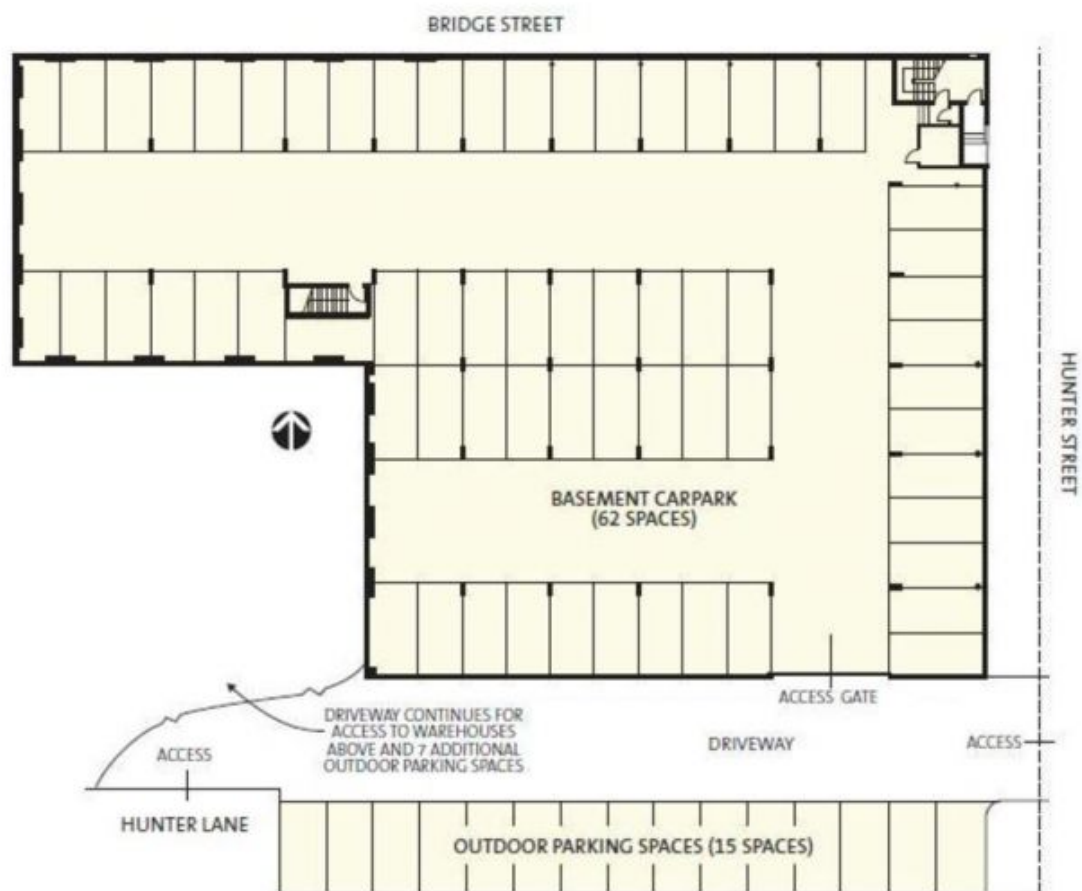
Disclaimer: All data is provided for information purposes



Disclaimer: Plans shown here are for presentation purposes and are not part of any legal document or title and are subject to errors, omissions, and inaccuracies and should not be used as sole reference. All measurements and figures are approximate. Interested parties should make their own enquiries.

Hornsby • 6-18 Bridge Street

Floor Plans (Basement Car Park)



Disclaimer: Plans shown here are for presentation purposes and are not part of any legal document or title and are subject to errors, omissions, and inaccuracies and should not be used as sole reference. All measurements and figures are approximate. Interested parties should make their own enquiries.